

February 2, 2017

Responding to Sea Level Rise

The Port has initiated sea level rise response-planning in collaboration with the City of Olympia and LOTT Clean Water Alliance. To learn more about future projections and potential mitigation strategies, please join us at a community meeting on Wednesday, February 8 from 6:30 to 8:00 p.m. at the Olympia Center, Multipurpose Room A.



Responding to Sea Level Rise

Sea level rise and changing weather patterns pose a prominent flood risk to our downtown. Join us for an informational meeting.

Community Meeting

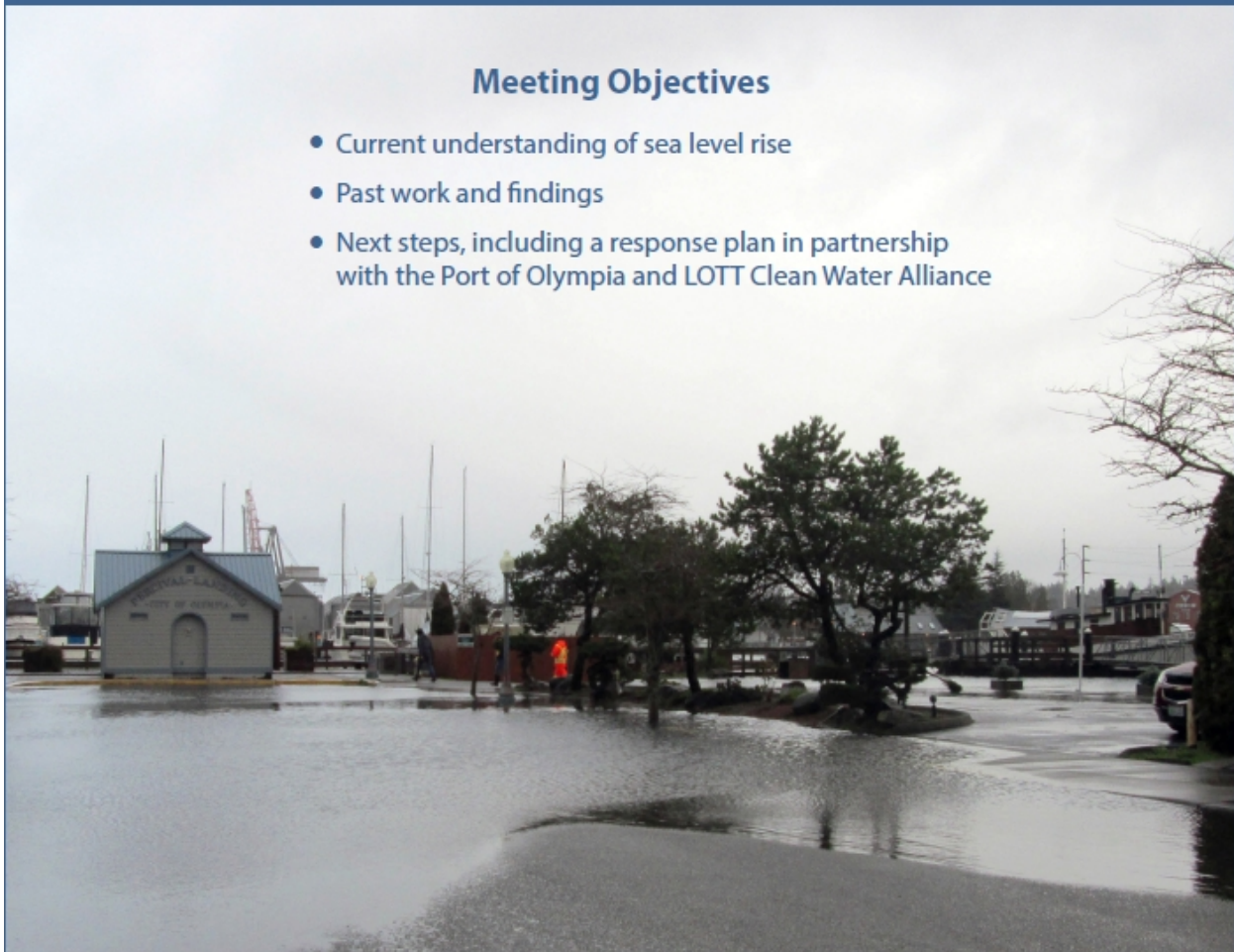
Wednesday, February 8, 2017

6:30 - 8:00 p.m.

Olympia Center, Multipurpose Room A

Meeting Objectives

- Current understanding of sea level rise
- Past work and findings
- Next steps, including a response plan in partnership with the Port of Olympia and LOTT Clean Water Alliance



Contact Andy Haub at 360.753.8475 for more information.
View the City of Olympia interactive Sea Level Rise map at olympiawa.gov/slr

###

Port Media Contact:

Ed Galligan, Executive Director
EdG@portolympia.com 360.972.5793

About Port of Olympia

The southernmost deepwater port on Puget Sound, the Port of Olympia owns and operates an international shipping terminal that handles a range of breakbulk and project cargoes. The Port also owns and operates Swantown Marina & Boatworks, a 733-slip recreational marina and boat haulout/repair facility, a regional airport and a real estate division.