



Serving All of Thurston County

**Commission Work Session**  
**Monday, July 17, 2023**  
**2:30 PM**

Percival Plaza - Olympics Room  
626 Columbia Street NW  
Olympia, WA 98501

The meeting agenda is available on the Port's website as of July 14, 2023.

<https://www.portolympia.com/commission>

The public may join the meeting from their computer, tablet or smartphone at:

<https://us02web.zoom.us/j/86339997785?pwd=V3Y1THh3aVJhL1BwbEYwam5FR1E2dz09>

or Telephone: 1 253 215 8782

Webinar ID: 863 3999 7785

Passcode: 473981

*Please note that the Zoom link changes for each meeting.*

NOTE: *No public comment or commission action will be taken at this Work Session.*

## AGENDA

- A. Call to Order
- B. Approval of Agenda
- C. Budd Inlet Sediment Management Discussion – Jim Maul, Gemini Environmental Strategies, and Rob Webb, Dalton, Olmsted & Fuglevand (DOF) Consultants
- D. Port Commissioner Compensation – Ben McDonald, HR and Administrative Director
- E. POCAC Committee Assignments – Camille St. Onge, Strategic Initiatives and Commission Affairs Director
- F. Upcoming Topics – Rudy Rudolph, Acting Executive Director
- G. Adjourn

**Port of Olympia Mission**

*Creating economic opportunities and building community for all of Thurston County through responsible resource use.*

## COVER MEMO

**Briefing Date:** July 17, 2023

**Staff Contact/Title:** Rudy Rudolph, Operations Director, 360 584-4126,  
rudyr@portolympia.com

**Subject:** Budd Inlet Sediment Management Discussion

**Purpose:**  Information Only     Decision Needed

### Background/Overview:

The Port Commission has asked for a presentation on the Budd Inlet project sediment management concepts.

### Documents Attached:

PPT

# Budd Inlet Cleanup Sediment Management

July 17, 2023

Jim Maul and Rob Webb  
Budd Inlet Consultant Team

1

## Agenda

- Budd Inlet Preferred Remedy
- Methods to Manage Sediment
- Costs

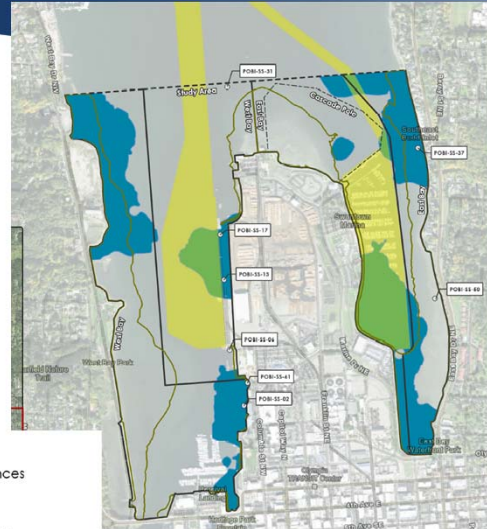


2

2

## Preferred Remedy

- Dredging in navigational areas
- Dredging, Capping, Enhanced Natural Recovery in non-navigational areas
- Navigation Area Dredging ~ **565,000 CY Dredge Material**
- Dredging of **"Hot Spots"** outside of Navigational Areas will **increase volume**



- Legend**
- Benthic RAL Exceedances
  - Intertidal Sediment
  - Navigation/Future Maintenance Dredge Area
  - Site-wide and Intertidal RAL-Based Remediation Area
  - Overlap Areas

3



3

## Dredge Material

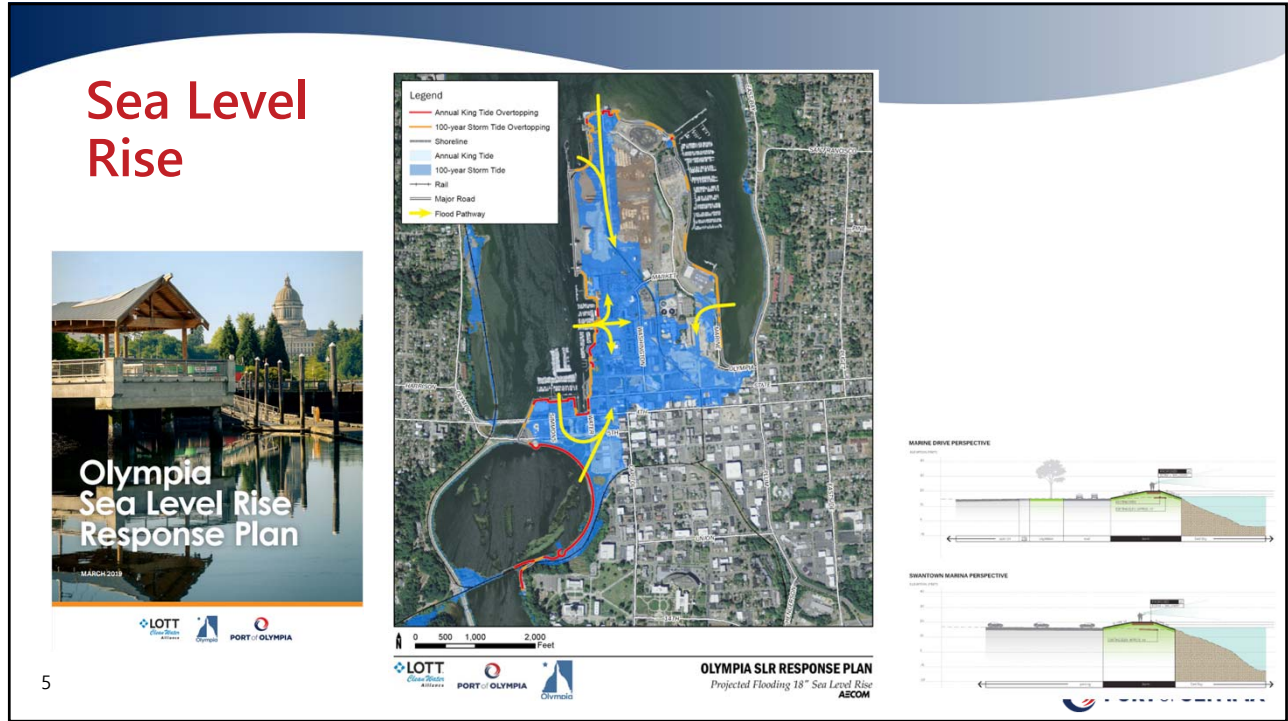
- Sediment (gravel, sand, silt, clay) and Debris (logs, chains, cables, etc.)
- High Water Content
- Significant Fine Grain (silts, clays) Content



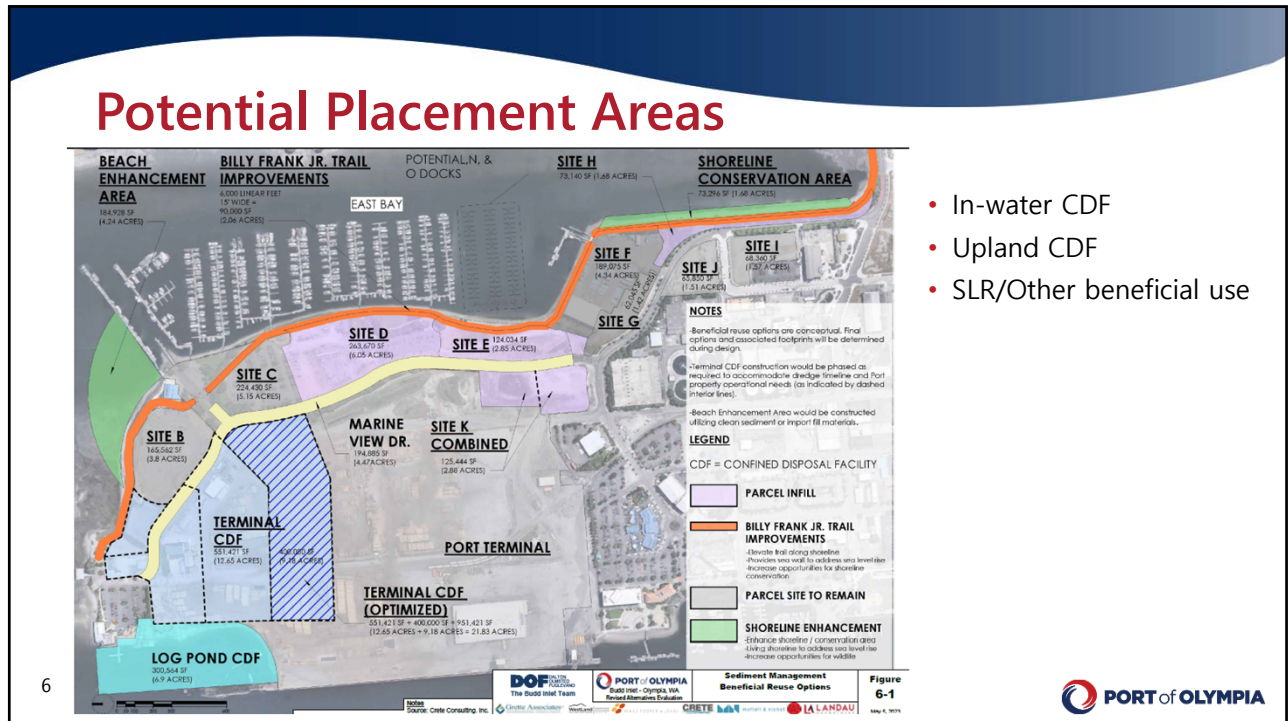
4



4



5



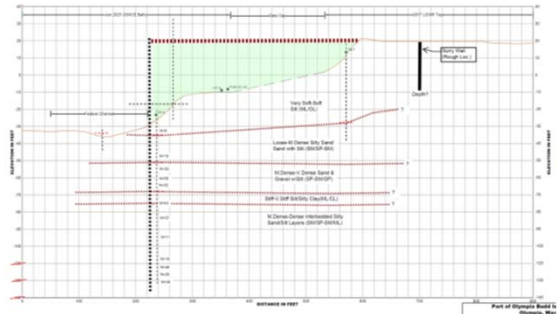
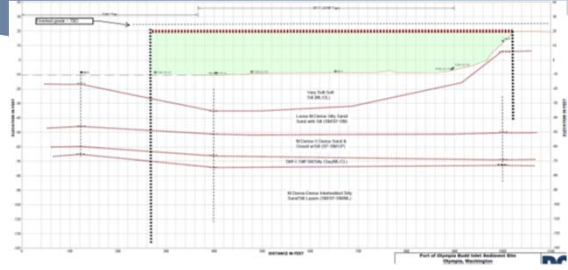
- In-water CDF
- Upland CDF
- SLR/Other beneficial use

6

# Log Pond CDF Concept



- Capacity: ~223,000 cy
- Sheet pile containment cell
- Similar to Cascade Pole CDF, but larger scale
- Addresses existing contamination within Log Pond
- Provides opportunity for Port terminal expansion or other uses



7



7

# Sediment Offload



8



8

## Dredge Material Management

- Manage Debris
- Sediment De-watering
- Stabilization/Solidification



9



9

## Upland CDF Design Concept

- Capacity: ~140,000 – 240,000+ cy
- Earthen containment berm
- Similar to Cascade Pole CDF, but larger scale
- Dimensions to be determined based on:
  - Available Port property
  - Port property development plans
  - Site constraints
  - SLR considerations
- Sediments amended to provide required subgrade strength for Port operations

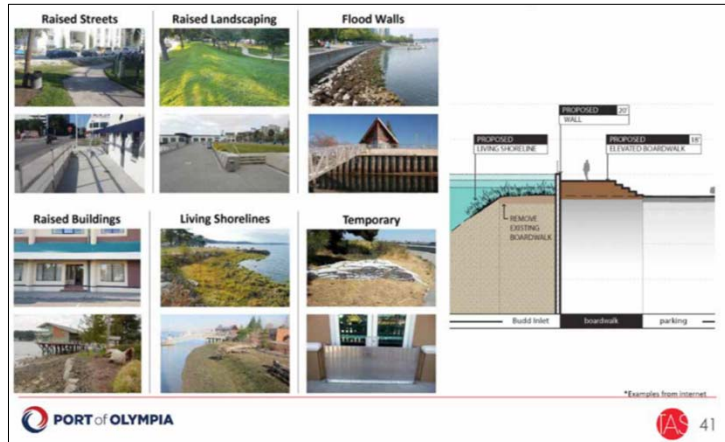


10

10

## Shoreline Resiliency/Sea Level Rise Improvements

- Capacity: ~120,000 cy
- Sediment mixed with cement and other amendments to produce structurally competent fill material
- Fill incorporate into shoreline resiliency and waterfront development features
- Placement locations/dimensions to be determined based on:
  - Available Port property
  - Port property development plans
  - Site constraints
  - SLR considerations



11



11

## Sediment Management Costs

(Excluding dredging etc.)

Management Option	Estimated Cost per Cubic Yard
Offsite Subtitle D Landfill	~\$175
Near Shore (In-water) CDF	~\$230
Upland CDF	~\$55 to \$80
SLR Improvements	~\$60 to \$80

**For 100,000 CY Dredge Material**

Landfill	\$17.5M
Onsite Upland CDF/SLR	\$5.5M to \$8M

12



12



# Discussion



13

## COVER MEMO

**Briefing Date:** July 17, 2023

**Staff Contact/Title:** Ben McDonald, Human Resources & Admin Director,  
benm@portolympia.com; 360-528-8003

**Subject:** Commissioner Compensation

**Purpose:**  Information Only     Decision Needed

### Background/Overview:

In accordance with RCW 53.12.260, section 3: "...a port commission may set compensation to be paid to commissioners."

### Attachments:

Power Point

Comparable wages from the 2022 Washington Public Ports Association (WPPA) Tax Levy & Compensation Survey

# COMMISSIONER COMPENSATION

July 17, 2023  
BEN MCDONALD  
HUMAN RESOURCES & ADMINISTRATIVE DIRECTOR

1

## BACKGROUND

- Commission Compensation is guided by RCW 53.12.260.
- Port of Olympia Commissioners are currently paid \$600 per month in wages and \$128 for per diem.
  - Per diem is "time spent (a) in actual attendance at official meetings of the port district commission, or (b) in performance of other official services or duties on behalf of the district."
  - Maximum is 75 days per year.
- The 2022 Washington Public Ports Association (WPPA) Tax Levy & Compensation Survey was previously provided to review for comparable commission salaries.
- The current Commission is not eligible to receive the wage increase. The wage increase is for commissioners who are newly appointed or who have been reelected. Effective date for the increase is January 1, 2024.

2

2



# DISCUSSION

3



PORT	PER-DIEM	MONTHLY SALARY	H/A INSURANCE	LIFE INSURANCE
Anacortes	\$128	\$600	Yes	Yes
Bellingham	\$128	\$700	Yes	Yes
Benton	\$128/day	\$1500/month	Yes	Yes
Bremerton	\$128	\$1,000	Yes	Yes
Brownsville	\$128	\$285	No	No
Camas-Washougal	\$128	\$350	Yes	No
Centralia	\$128		Yes	Yes
Chelan Douglas RPA	\$128	up to \$1,000 per month.	Yes	Yes
Chinook	waived		No	No
Clarkston	\$128		Yes	No
Columbia	\$128		No	No
Coupeville	\$128		No	No
Dewatto	\$128	None	No	No
Edmonds	allowed as per RCW	amount allowed as per RCW	Yes	Yes
Ephrata	\$128		No	No
Everett	\$32/hour up to \$128/day	\$713	Yes	Yes
Friday Harbor	\$128	\$285	Yes	No
Garfield County	\$128	None	No	No
Grandview	\$128		No	No
Grant County PD No. 7	\$3		No	No
Grays Harbor	\$128	\$713	Yes	Yes
Hartline	75.00 per meeting		No	No
Hoodsport	\$128		No	No
Illahee	\$128 per meeting		No	No

<b>PORT</b>	<b>PER-DIEM</b>	<b>MONTHLY SALARY</b>	<b>H/A INSURANCE</b>	<b>LIFE INSURANCE</b>
Ilwaco	\$128		No	No
Kalama	\$128	\$285	Yes	Yes
Kennewick		\$2,672	Yes	Yes
Kingston	\$128	\$285 per day of meeting	Yes	No
Klickitat	\$128	200-285	Yes	Yes
Longview	\$128	Stipend - \$713	Yes	Yes
Lopez	\$128		No	No
Manchester	\$128.00		No	No
Mattawa	\$102		No	No
Moses Lake	\$128	\$285	No	No
Olympia	\$128	\$600	Yes	Yes
Orcas	\$128.00	\$285	No	No
Othello	\$128		No	No
Pasco	\$128	\$1,500	Yes	Yes
Pend Oreille	\$128	\$285	No	No
Port Angeles	\$128	\$285	Yes	Yes
Port Townsend	\$128	\$285	Yes	Yes
Quincy	\$128	\$285	No	No
Ridgefield	None	\$331	Yes	Yes
Royal Slope	\$109		No	No
Seattle		\$4,060.92	Yes	Yes
Shelton	\$128/day	\$1250/month	Yes	Yes
Silverdale	same	\$1,500 per month	No	No
Skagit	\$128	\$1,500	Yes	Yes
Skamania County	\$128		No	Yes

<b>PORT</b>	<b>PER-DIEM</b>	<b>MONTHLY SALARY</b>	<b>H/A INSURANCE</b>	<b>LIFE INSURANCE</b>
South Whidbey	\$128	\$285	No	No
Sunnyside	\$128	\$454	Yes	Yes
Tacoma	\$128	\$2,023	Yes	Yes
Tracyton	\$128 per meeting		No	No
Vancouver USA	\$128/day; max. 120 meetings	\$800	Yes	Yes
Wahkiakum County Port Distri	\$128		No	No
Wahkiakum County Port Distri	\$128		No	No
Walla Walla	\$128	\$750	Yes	Yes
Warden	\$128		No	No
Whitman County	\$128	\$649	No	No
Willapa Harbor	\$128		Yes	Yes
Woodland	\$128	no	Yes	No

## COVER MEMO

<b>Briefing Date:</b>	July 17, 2023
<b>Staff Contact/Title:</b>	Camille St Onge, Strategic Initiative & Commission Affairs Director, 360 528-8000, camilles@portolympia.com
<b>Subject:</b>	Port of Olympia Citizens Advisory Committee (POCAC) Work Plan
<b>Purpose:</b>	<input checked="" type="checkbox"/> Information Only <input type="checkbox"/> Decision Needed

### **Background/Overview:**

The is a follow-up discussion with the Port Commission on the POCAC 2023 Work Plan in preparation for the joint meeting on July 18, 2023.

### **Documents Attached:**

PPT





# CHARTING OUR COURSE

Citizen Advisory Committee Assignments

July 17, 2023

Camille St. Onge  
Director of Strategic Initiatives &  
Commission Affairs

1

## Today's discussion Charting Our Course

- Roles
- Overview of joint meeting



2

## Director of Strategic Initiatives & Commission Affairs

### Working with the Commission and Citizen Advisory Committee

- Policy analysis and research in support of the Port Commission.
- Manages the affairs of the Port Commission.
- Support Commissioners in their roles in community committees.
- Primary staff conduit to Advisory Committee and implements changes to role and structure to Committee.



3

### Examples of working with Commissioners

- Joint Commission & Advisory Committee project planning.
- Primary & post election commissioner communications.
- Media training.
- Preparing for 5-member Commission.
- And more.



photo credit: Thurston Talk

4

## Joint Commission & Advisory Committee Meeting

### Overview of Session

- Resolution 101.
- Present assignments from Commission.
- Share an assignment framework to tee up success.
- Review resolution and proposed changes to support assignments.



5

## Closing Discussion & Questions



6