



## MISSION

Creating Economic Opportunities by Connecting Thurston County to the World by Air, Land, and Sea.

## VISION

A Port that contributes to a more resilient community



## FOCUS AREAS

Following extensive planning and discussion, the Port Commission reaffirmed its commitment to serving as a change agent and leader in the following areas:

- Creating Economic Opportunities
- Acting as an Environmental Steward
- Creating and Maintaining Community Assets

Combined investment in these community-designed priorities will help move us toward our ultimate goal: A More Resilient Thurston County.

### Creating Economic Opportunities:

The Port is committed to utilizing its assets and authorities to enhance the quality of life throughout Thurston County by creating, retaining, and growing economic and employment opportunities while providing a competitive value to our customers.

### Act as an Environmental Steward:

The Port is committed to sustainably managing the natural resources impacted by our activities by complying with environmental regulations and implementing innovative environmental management initiatives.

### Creating and Maintaining Community Assets:

The Port is committed to providing a benefit to the citizens of Thurston County by creating and maintaining public amenities and infrastructure to support recreational and community use, tourism, and emergency management.

### Did You Know?

The Port is a central player in creating and maintaining prized community assets. Examples include:

- Olympia Farmers Market
- Port Plaza
- East Bay Trail
- Harbor Patrol
- Olympia Regional Airport and NewMarket Industrial Campus
- Lacey Hawks Prairie Industrial Buildings

Find Out More and Sign Up for a Tour at [portolympia.com](http://portolympia.com)

# VALUES

Port decision-making and priority-setting are based on the following values:

## Accountable • Balanced • Engaged Innovative • Sustainable

- **Accountable:** Openness, Integrity, Responsiveness
- **Sustainable:** Financially Sound, Environmentally Responsible, Socially Engaged and Informed
- **Innovative:** Leadership, Risk-Taker, Entrepreneurial, Creative, Dynamic
- **Balanced:** Diverse values and ideas, Our Future and Our Heritage, Geographical Representation, Success and Impact in the three Focus Areas
- **Engaged:** Collaborative, Active and visible in the community, Connected to our Partners and Stakeholders, Fostering Two-Way Communication, Committed to Developing Successful Staff. The connection of the Port's Values to the Focus Areas is often visually displayed by encircling the Focus Area Diagram with the five values. This shows how we apply our values to every decision or action, regardless of the focus area.

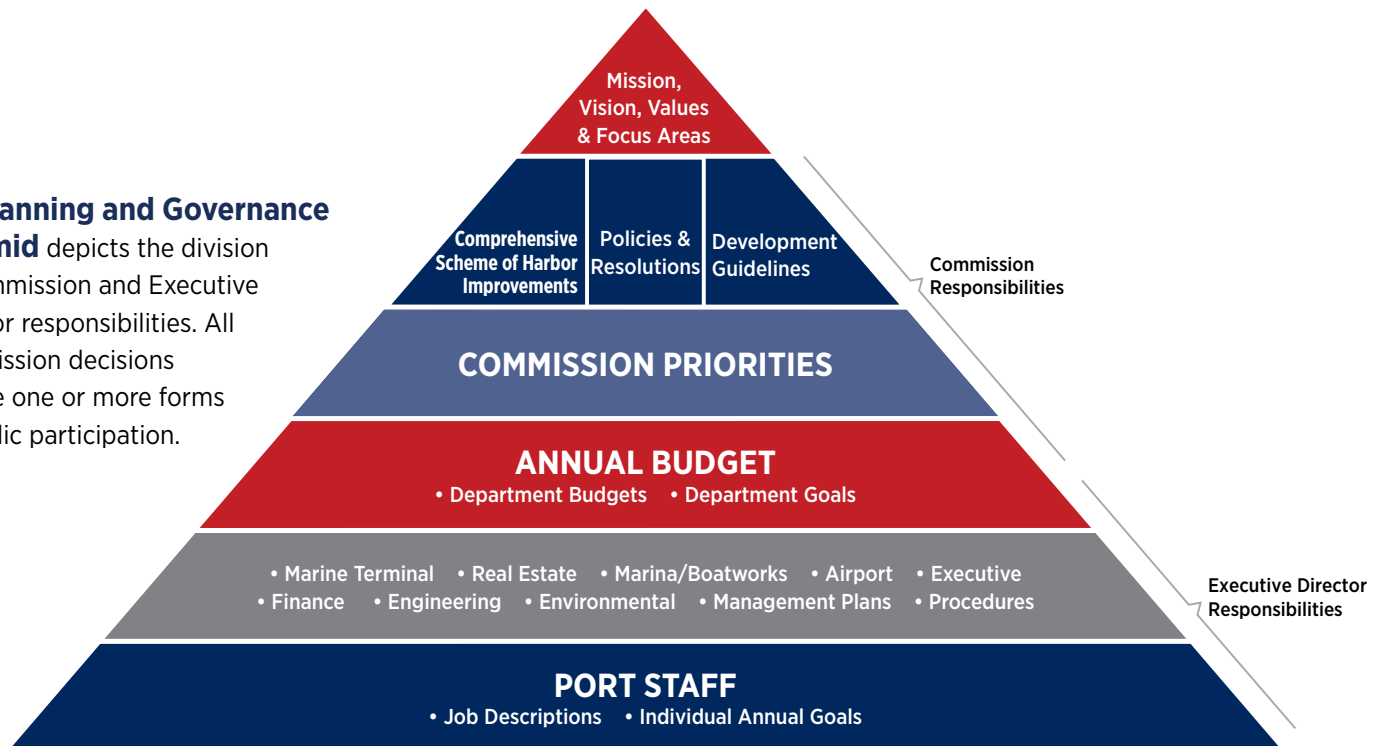




## About the Port of Olympia

The southernmost deepwater port on Puget Sound, the Port of Olympia owns and operates an international shipping terminal that handles a range of breakbulk and project cargoes. The Port also owns and operates Swantown Marina & Boatworks, a 733-slip recreational marina and boat haul-out/repair facility, a regional airport and a growing real estate division.

The **Planning and Governance Pyramid** depicts the division of Commission and Executive Director responsibilities. All Commission decisions include one or more forms of public participation.



The foundation of the pyramid rests on the authorities and powers of RCW 53 and other regulating factors. Resolution 2017-03 was unanimously adopted by the Port of Olympia Commission on March 13, 2017.



**PORT of OLYMPIA**

606 Columbia St NW Ste 300  
Olympia, WA 98501

Tel **360.528.8000**  
Fax **360.528.8090**

inquiries@portolympia.com  
**PORTOLYMPIA.COM**